

For the Most Demanding cGLP/GMP Laboratories

The DDM 2910 Automatic Density Meter

United States Department of Commerce
National Institute of Standards and Technology



NVLAP LAB CODE: 200898-0
Accreditation to ISO/IEC 17025:2005



Densitometry

Applications

The DDM 2910 Density Meter, with high precision Peltier temperature control of sample, has the features to meet the needs of today's industries.



PETROLEUM

- Measure API Values in accordance with ASTM D1250, ASTM D4052, ASTM D5002 and DIN 51757
- QC incoming raw materials
- Research new products and additives
- Withstands harsh and heavy use environments
- Calibrate using petroleum standards



CHEMICAL

- Measure in units of Kg/m³, g/cm³, g/mL, pounds/gallon, specific gravity, Baumé and more
- Determine concentrations in: %, molarity, normality, mole fraction, ppm, and more
- Check batch consistency and ensure proper blending ratios
- Wetted materials compatible with the most aggressive chemicals



PHARMACEUTICAL

- Capable of multiple measurements with standard deviation, min and max reading for true cGLP/GMP compliance
- Complete IQ/OQ/PQ documentation
- Checking of raw materials and product release
- 21CFR11 Compliance; Electronic Signature and Secure Data Storage
- Compliant with USP 29<841>, JP, BP and EP



BEVERAGE

- Measure both alcoholic and non-alcoholic beverages with easy bubble detection using VideoView™
- Direct and accurate means of °Brix determination, °Plato, Extract, % Solids
- Use apparent density function for proper filling volume monitoring

Flexible Method Management

Factory installed measurement methods allow for immediate selection of the correct method to match the most common applications.

NAME	TYPE	ADD	EDIT	RENAME	DELETE	VIEW	RESULTS	PRINT CONFIGURATION	CLOSE
AOAC Ethanol	Factory								
Brix	Factory								
Crude Oil	Factory								
Density	Factory								
Density Continuous	Factory								
Density through Temperature	Factory								
Density VC	Factory								
Factory QC Testing	Factory								
Fuel Oil	Factory								
HCl	Custom								
Lubricants	Factory								
OIML Ethanol	Factory								

For unique measurement applications, create a sample method using an unlimited number of Concentration Tables, Formulas, and Polynomials to match the measurement methods used in your laboratory. A few customized sample methods shown below:

- Concentration D₂O – Heavy Water
- Mole Fraction of Methanol
- Baumé of Hydrochloric Acid
- % HNO₃
- Normality of Sulfuric Acid
- Monomer Solutions
- Density of Gasses and Aerosols
- Potassium Permanganate
- Drug to Propellant Ratio
- Hydrogen Peroxide
- Lead Content
- Molar Solutions of EDTA
- ppm Gold in Acid
- SG of Urine
- % Toluene in Heptane
- Sweeteners
- Fat in Lubricant
- Sodium Hydroxide

Setting up your custom method is as simple as filling out a few screens like the one below.

Method Settings [Density]

Measurement Mode: Single

Measurement Stability Criteria: FULL (+ or - 0.0000150 g/cm³ for 30 secs with 5 decimals)

Temperature Stability Criteria: +/- 0.03 deg for 20 secs

Temperature: 20.00 Deg C HEATED INTERFACE

Air Pump Switch off mode: Auto (DEFAULT AUTO DRY)

Density Input: Density NC

Sample Details: Sample Lot ID

Product: YES

MEASUREMENT PARAMETERS DISPLAY PARAMETERS DISPLAY SETTINGS SAVE CANCEL

По вопросам продаж и поддержки обращайтесь:

Астана +7(77172)727-132 Волгоград (844)278-03-48 Воронеж (473)204-51-73 Екатеринбург (343)384-55-89 Казань (843)206-01-48 Краснодар (861)203-40-90 Красноярск (391)204-63-61 Москва (495)268-04-70 Нижний Новгород (831)429-08-12 Новосибирск (383)227-86-73 Ростов-на-Дону (863)308-18-15 Самара (846)206-03-16 Санкт-Петербург (812)309-46-40 Саратов (845)249-38-78 Уфа (347)229-48-12

Единый адрес: rdl@nt-rt.ru Веб-сайт: www.rudolph.nt-rt.ru

Full cGMP/GLP Compliance



Versatile Communication Capability

The DDM 2910's standard communication package includes:

- Ethernet Port for Network Cable Connection
- 5 USB ports
- 2 RS 232 ports

Allowing the capability to:

- Connect directly to Rudolph's service department for remote testing and diagnostics via Internet connection.
- Connect to any Windows® based printer via USB or direct to the server via Windows® Print Library
- Save measurement data locally and directly to your Network/Server



cGMP/GLP Printing

Sample measurement reports are edited quickly and easily. Just import your logo to the DDM 2910 Density Meter and print your company's customized "C of A" directly.

Print your customized Certificate of Analysis including your company logo directly from the DDM 2910 touch screen

A screenshot of a customized Certificate of Analysis (COA) report. The report includes the company name 'Rudolph Research Analytical', address '55 Newburg Road, Hackettstown, NJ 07840 USA', and logo. It specifies the date '26-Jan-2007', the sample measurement details 'This sample was measured on DDM 2910 serial number 20212, manufactured by Rudolph Research Analytical, Hackettstown, NJ, USA.', and the lot ID '2019'. The temperature is noted as '20.0 Deg C'. A table of measurement results is provided, showing multiple samples with their respective IDs, densities, specific gravities, normalities, HCL percentages, and Baume readings. Statistical data at the bottom shows a count of 5, an average density of 1.0980, and a standard deviation of 0.0000.

No	Sample ID	Density	Sp. Gravity	Normality	HCL % wt	° Baume	Time
1	8421	1.0980	1.1000	6.009	19.95	12.94	14:20:50 PM
1	8421	1.0980	1.1000	6.009	19.95	12.94	14:21:40 PM
1	8421	1.0980	1.1000	6.009	19.95	12.94	14:22:30 PM
1	8421	1.0980	1.1000	6.009	19.95	12.94	14:23:20 PM
1	8421	1.0980	1.1000	6.009	19.95	12.94	14:24:10 PM

Counts : 5
Average : 1.0980
SD : 0.0000
Maximum : 1.0980
Minimum : 1.0980

Capable of making multiple measurements on a single sample and reporting complete statistical data and all measurement results

Traceable Calibration Standards

Rudolph knows how important it is to calibrate with Traceable Standards and therefore, we include a standard in the accessories provided with your density meter. The DDM 2910 standard accessories include:

- Quick Start Guide
- IQOQPQ Documentation
- Luer Syringes
- Filling Nozzles
- Connecting Fittings & Tubing
- Traceable Standard
- Rinse/Sample Waste Container
- Manual

The Simplicity of Touch Screen Measurement v

Full Feature VideoView™ with Automatic Scanning of Entire U-Tube

VideoView™ provides superior high resolution visual bubble detection within your samples with live on-screen video viewing. A full view of the entire U-tube is possible without any obstruction and provides Rudolph's industry leading 10X magnification of bubbles if present in the sample.

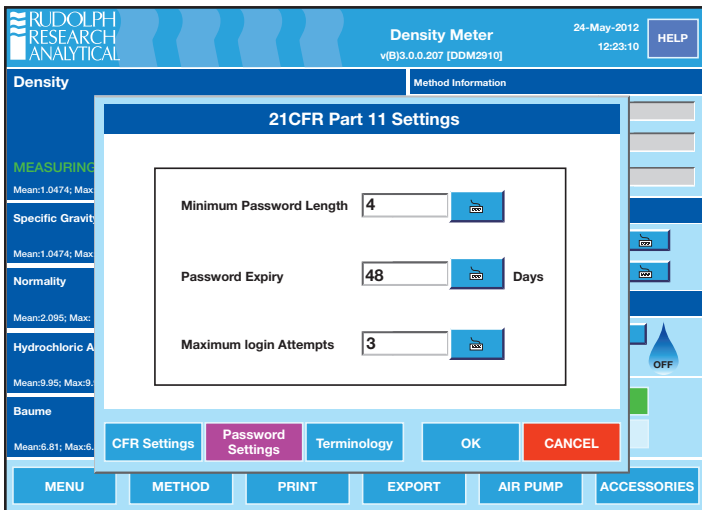
Automatic scanning of the entire length of the U-tube is possible as well as manually controlled viewing positions. The video clarity, magnification, and resolution is the very best available. Rudolph's exclusive VideoView™ is protected under Patent #7,437,909.



Full 21CFR Part 11 Instrument Level Compliance

The DDM 2910's 21CFR Part 11 software module is easily enabled through the user friendly touch screen. This module gives you full compliance with:

- Electronic signature
- Access levels
- Internal write protected storage
- Unique passwords
- Write protected documents sent directly to server

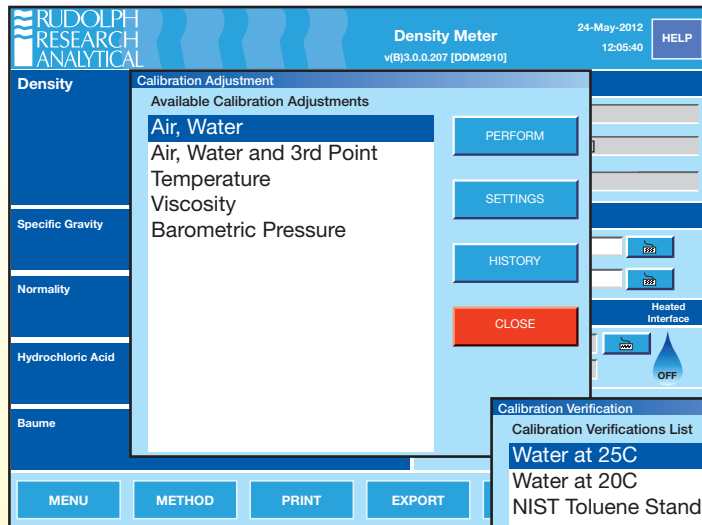


Oscillating U-Tube with Viscosity Correction and Reference Oscillator

(Patent # 7,735,353)

The DDM 2910's oscillating U-tube with full range viscosity correction and reference oscillator allows long term calibration stability and measurement at all temperatures with a single calibration.

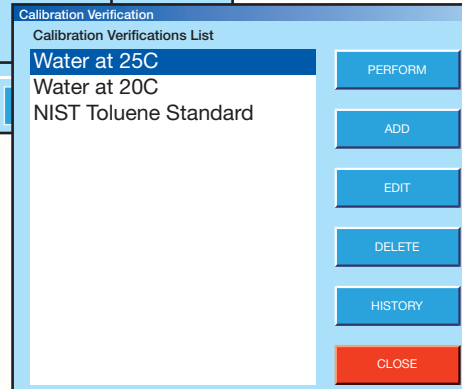
with the Flexibility of Embedded Windows® 7



- Unlimited number of customized calibration adjustments and calibration verifications possible.
- Complete History of Calibration Adjustments and Verifications are available to View, Print, and/or Export
- Possible to set calendar reminders as to when Calibrations are due

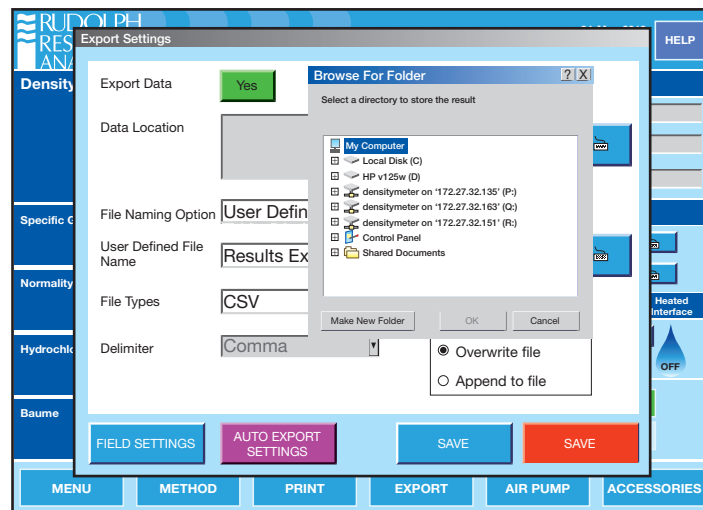
cGMP/GLP Calibration

- Calibrate the DDM 2910 with 2 or 3 Traceable Standards – calibrating with merely air and water appears inconsistent with cGMP/GLP compliance regulations.
- Can print out complete method configuration, communication settings, as well as calibration verification and calibration adjustment data/history.
- Measured values can be shown continuously as temperature stability is being reached or, at the discretion of the user, measured values will only be displayed once the final answer is reached and completely stable.

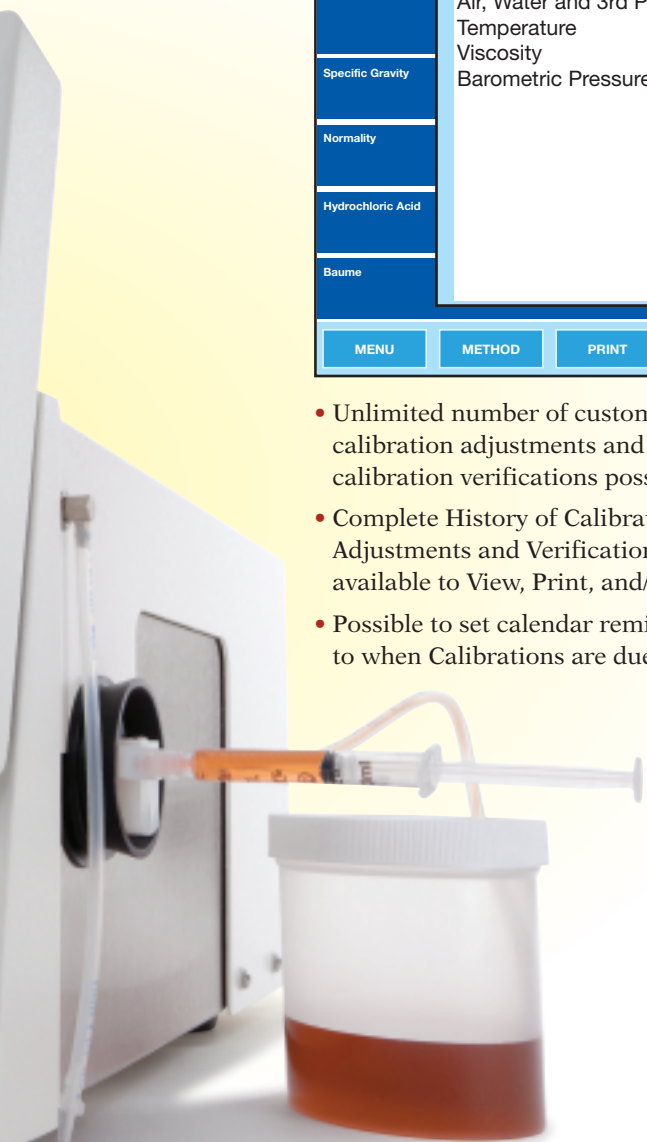


Computer Embedded Windows 7 Based Flexibility

- 8 gigabytes of internal memory allow almost unlimited capacity for saving measurement data. The DDM 2910 is network ready and data may also be saved directly to your server or to any directory desired.
- Internet access is possible directly from the DDM 2910's touch screen. The embedded Disk Protection feature protects the operating system against malware infections in networked environments.
- Embedded Windows 7 based navigation architecture is so intuitive that most operators will never read the manual. But should you wish to reference the manual, it is stored right on the DDM 2910's internal memory.



- Copy methods, transfer concentration tables, download data, etc., via the USB ports on the front of unit.
- Five USB ports allow for quick and easy connection to a mouse, keyboard, printer, bar code scanner, or memory stick.



Automation Flexibility

- Rudolph's AutoSampler can be loaded with up to 240 samples
- Combine density and specific gravity measurements with a polarimeter, refractometer, and colorimeter for simultaneous measurements of:
 - Density/Specific Gravity
 - Refractive Index
 - Color
 - Optical Rotation/Specific Rotation
- Up to three different rinse solvents available for use; fully programmable
- Two sample loading modes; pressurized and suction; for optimizing sample transfer and measurement
- Customer's unique sample bottles may be used to eliminate the need to transfer samples into special sized test tubes.
- Emergency samples measured at any time without stopping the AutoSampler or moving sample vials.
- Numerous configurations and solutions. Call us today for the solution that is right for your application.



Specifications of the DDM 2910

Measurement Ranges:	Density: 0 to 3 g/cm ³ Temperature: 0 °C to 95 °C (controlled via Peltier) Pressure: 0 to 10 bars	Communication Interface:	Touch Screen User Interface 5 – USB Ports 2 – RS232 Ports Ethernet Port for Network Connection, Keyboard, Bar Code Scanner, Mouse, Network Capabilities
Measurement Modes:	Continuous, Single, Multiple	Video Scanning & Magnification:	Video assisted view of entire cell, capable of approximately 10X magnification with scanning camera
Measurement Technique:	Mechanical Oscillator Method	Internal Memory:	8GB Non-removable Compact Flash
Accuracy:	Density: 0.0001 g/cm ³ Temperature: 0.05 °C	Shipping Dimensions:	24.5" (L) x 17.5" (W) x 22" (H) 62cm (L) x 44cm (W) x 56cm (H)
Repeatability:	Density: 0.00005 g/cm ³ Temperature: 0.02 °C	Shipping Weight:	50 lbs. (23 kg)
Resolution:	Density: 0.00001 g/cm ³ Temperature: 0.01 °C	Power Supply:	85 to 260 VAC; 48 to 62 Hz
Minimum Sample Volume:	Less than 1mL	Power Consumption:	140 Watts at peak
Wetted Materials:	Borosilicate glass, Teflon (PTFE, ECTFE)	Measurement Time:	30 - 60 seconds
Operating System:	Embedded Windows 7; embedded software safe from malware and viruses	Origin of Manufacture and Design:	USA
Display:	10.4 inch diagonal TFT type LCD with wide viewing angle, anti-glare flat panel touch screen, 300 nits brightness, 800 x 600 pixels, chemical and scratch resistant monitor, the industry's largest and most flexible interface		



По вопросам продаж и поддержки обращайтесь:

Астана +7(77172)727-132 Волгоград (844)278-03-48 Воронеж (473)204-51-73 Екатеринбург (343)384-55-89 Казань (843)206-01-48 Краснодар (861)203-40-90 Красноярск (391)204-63-61 Москва (495)268-04-70 Нижний Новгород (831)429-08-12 Новосибирск (383)227-86-73 Ростов-на-Дону (863)308-18-15 Самара (846)206-03-16 Санкт-Петербург (812)309-46-40 Саратов (845)249-38-78 Уфа (347)229-48-12

Единый адрес: rdl@nt-rt.ru Веб-сайт: www.rudolph.nt-rt.ru